



# The Shrewsbury Public Library

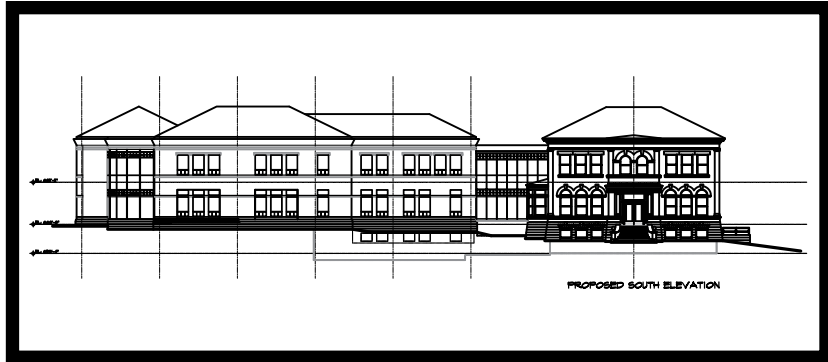
Summer 2009

## From the Director:

Dear Readers,

In early April, an article about libraries appeared in the *Telegram & Gazette* newspaper, entitled "Fewer Days, Shorter Hours, Tight Money". Regrettably, these six words accurately describe the challenges libraries are facing in this economic downturn. If you happened to read my letter in the previous newsletter, you also know that library use is skyrocketing. Clearly, this is not an easy time for libraries. Giving examples of these conflicting pressures, the *Telegram* noted that the Northborough Public Library had just opened its new building, all while facing reduced resources to keep the library open. Fewer hours seem the antithesis of the promise to be found in a new library building. Some even ask "Why build a new library if you can't keep it open?" That same question could be asked of the SPL's proposed building project. As the fiscal year 2010 budget process progressed, it might have been tempting to table the proposal for SPL's renovated, expanded and updated library building. With fewer resources, doesn't it make sense *not* to build for the future? Isn't it better to just hunker down and deal with the future when the economic climate improves?

Fortunately, our Board of Trustees has decided that planning for the future is not only wise, but absolutely critical in these difficult times. In fact, as we've gained a better understanding of the severity of the economic downturn, it's become apparent



related strain on the library have made it clear that we must undertake a new plan. That plan must address today's challenges and be more strategic in nature (as opposed to structured around static conditions). Diminished resources will make this undertaking difficult, but if we are to assure a bright future for the library, planning must take place now.

Second, the Board continues to advance the SPL's building project. Despite difficult economic pressures the Board has courageously declined to step away from its responsibility to address both the current and future needs for the library building. The Board wisely understands that ignoring the space, capital repair and accessibility needs for the library building is not an option. The Board continues to assess the many challenges and present viable options for the community to consider. Whatever their recommendation, it must be done with the

## If we are to assure a bright future for the library, planning must take place now.

long-term vision in mind, instead of focused solely on the challenges we face today.

that we must redouble our planning efforts. Two major initiatives are in place to do just that.

First, the board has decided to undertake a new long-range planning process. The library has been working within the framework of a long-range plan that covered the years 2005 through 2008. Diminishing budgets have slowed our progress. For the past three years, we extended the goal deadlines, thinking more time and alternative paths might be the key to reaching each goal. The incredible economic pressures of the past 6 months and the

Approximately two years ago, Town Manager Dan Morgado and I visited the newly expanded Ashland Public Library, a building designed by Beacon Architectural Associates, the same team who designed our proposed project. We were impressed with the functional and attractive design. During the tour, Library Director Paula Bonetti told us of the budget challenges they were facing, and that reduced funding meant their hours would be slightly reduced. On the trip back to Shrewsbury, Mr. Morgado inquired about the viability of Ashland's library, with its larger building and

# Adult Services

~ Summer Programs ~



## Family Vacation Ideas

Volunteers from the Appalachian Mountain Club teach about some of the great opportunities in Central Massachusetts for family vacationing. Free to all interested. Brochures and other materials available. Pre-registration is requested (call 508-842-0081 x3). Another "Tightwad Tip for Tough Times!"

**Wednesday, June 10, 7:00-9:00PM**

## Social Security Seminar

As baby boomers approach retirement age, many of them are not aware of the current Social Security regulations. Come to this free seminar, and learn more about this important issue. No registration required.

**Wednesday, June 17**

**1:00-2:30PM OR  
6:30-8:00PM**

## SHREWSBURY GENEALOGY CLUB

Open to anyone interested in genealogical research of family history writing. Opportunities to share and learn. Occasional guest speakers. Handouts at most meetings. No fee! Come, and bring a friend! Final session of the Shrewsbury Genealogy Club until September.

**Monday, June 27, 7:30-9:00PM**

# Teens & 'Tweens

~ Summer Programs for 5-12th Graders ~

SPLAT presents...



## NEW MEMBER PIZZA PARTY!!

**THURSDAY, JULY 16 - 4:00PM-4:45PM**

Coordinated by Dan Barbour, the Young Adult Librarian, SPLAT is a group dedicated to enhancing teen and 'tween services within the Shrewsbury Public Library. The stress free and fun atmosphere of SPLAT meetings makes being a member a total blast... and it doesn't look bad on a college application either! Members help select material for the teen section (not just books - video games, DVDs, and music as well!). Members help plan events like scavenger hunts, video game nights, and other competitions. Membership is 100% free - we just ask that you come to a meeting about once a month - and meetings usually never go longer than forty-five minutes. The only requirement is that you live in Shrewsbury and are entering grades 5-12. This kickoff meeting is a great way to find out more about SPLAT and show your support of the library! If you come to the event, and find out it's not for you, don't worry! There is no pressure... but plenty of pizza! You really have nothing to lose! **NO REGISTRATION REQUIRED!**

## AREA 609

Teen Summer Reading 2009

Take part in a whodunit that's out of this world!  
Just a few of the many prizes you could win....

**Borders Giftcard** **Nintendo DSi**  
**Games** **Much more!**

# HERITAGE NIGHT

**THURSDAY, MAY 28 - 6:00-8:00PM**

People of all ages are encouraged to attend this event that brings countries from all around the world right to our library! Teens and 'tweens will be constructing booths to represent a number of countries. Play games, learn words in other languages, and even sample some food from around the world! 100% free! This is a drop in event - no registration required.

# FEELING FRIENDLY?

## Join the Friends of The Shrewsbury Public Library

### Why join the friends?

- \* Help sustain the library in these tough times
- \* Join with other citizens who wish to give their vote of confidence for the library
- \* Show what can be accomplished by joining others who believe the library matters

### Why join now?

- \* Help meet the goal of 300 new members this year - we are half way there!
- \* The library needs us now more than ever

### How is the Friends group funded?

- Money comes from Friends' memberships, fundraisers, and donations.

### What do the Friends do?

- Provide cultural programs for children, teens, and adults
- Hold the annual Friends of the Library Book Sale
- Host summer Concerts on the Common
- Provide first library card program for our youngest patrons
- Purchase equipment and other special needs for the library
- Help the library in many other ways!

## LEVELS OF 'FRIEND'SHIP':

<input type="checkbox"/>	FRIENDLY ACQUAINTANCE	\$5.00
<input type="checkbox"/>	TRUE FRIEND	\$25.00
<input type="checkbox"/>	BEST FRIEND	\$50.00
<input type="checkbox"/>	VERY BEST FRIEND*	\$100.00
<input type="checkbox"/>	BUSINESS ASSOCIATE*	\$300.00
<input type="checkbox"/>	OTHER AMOUNT*	\$_____

### CONTACT INFORMATION:

NAME: \_\_\_\_\_ PHONE: \_\_\_\_\_

ADDRESS: \_\_\_\_\_ E-MAIL: \_\_\_\_\_

*Make checks payable to "The Friends of the Shrewsbury Public Library." Mail donations to 609 Main St., Shrewsbury, MA. 01545*

*OR simply drop this completed form and payment off at the library.*

*\*A donation of \$100 or more will be rewarded with a complimentary leather bookmark and bookbag.*



*Back by popular demand!*  
**BEATLES**  
**FOR SALE**

**A Beatles Tribute Band**  
 Wednesday, July 29th, 6:00PM

Bring your blankets, chairs, and picnic dinner for lively evenings of free family entertainment!  
 RAIN LOCATION: Shrewsbury Senior Center on Maple Ave.



**PLAINFOLK**



**They're coming back for another great evening of folk music!**  
 Thursday, August 13th, 6PM



**BIG READ 2**

***The Things They Carried* by Tim O'Brien**

Watch for further updates in the fall newsletter. If we get the grant, it doesn't hurt to get a jump on reading the book!

**OPTIMALRESUME.COM**  
 THE OPTIMAL FIRST IMPRESSION

The Shrewsbury Public Library is excited to offer this new online service which can help job seekers create outstanding resumes. It is extremely easy to use - all you need is internet access and a valid library card. You can logon from home or at the library!

Sponsored By



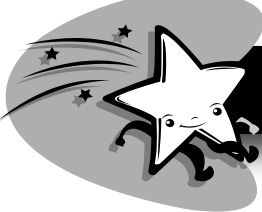
**Job Search Tools**

Available at the Library

- Computers with internet connections for job searches
- Microsoft Office for resumes and letters, or for computer skills practice
- Resume and cover letter how-to and advice books
- Reference USA - detailed info on over 13 million businesses
- Job search and career path books
- Many materials for enhancing your current skills or learning new ones



**Wanna know what was happening in 1851?**  
 The Shrewsbury Public Library now has microfilm from the New York Times dating from 1851-2007! Just ask at the reference desk to see this great resource.



# Children's Room

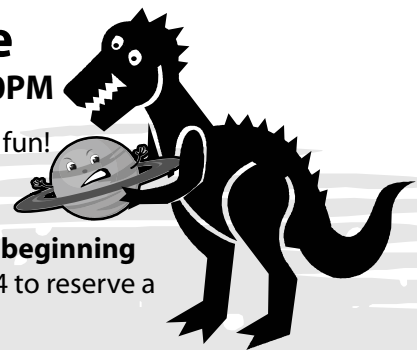
~ Summer Programs ~

## STARSHIP ADVENTURES

### Dinoman-Space

Thursday, June 25 @ 2:30PM

An interactive variety show of fun! For kids and their grown-ups. Space is limited. Get your free tickets in the Children's Room **beginning June 8** or call 508-842-0081 x4 to reserve a spot.



This program is supported by a grant from the **Shrewsbury Cultural Council**, a local agency supported by the Massachusetts Cultural Council, a state agency.

### Aldrich Astronomical Society presents Meteorites: Thunderstones from Outer Space

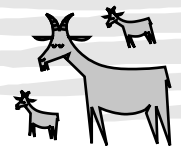
Saturday, June 27 @ 10:00AM

Appropriate for school age children and their families. Slide show and hands-on demonstrations. Door prizes for children who attend and a chance to win Spacey. Please register **beginning June 12**.

### Pumpnickel Puppets presents The 3 Billy Goats Gruff / The Lion and the Mouse

Monday, July 27 @ 2:30PM

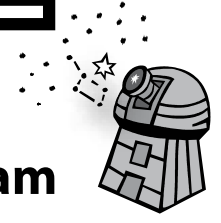
Space is limited. Free tickets available **beginning Monday, July 13**.



### Museum of Science presents Rockets: There and Back

Tuesday, August 11  
Appropriate for grades 1 - 4. Learn how rockets work and the challenges of traveling huge distances. Hands-on workshop. Latex balloons will be used. Space is limited. Please stop in the Children's Room or call 508-842-0081 X4 **beginning July 27** for show times and to reserve your tickets.

### Starship Adventure Summer Reading Program

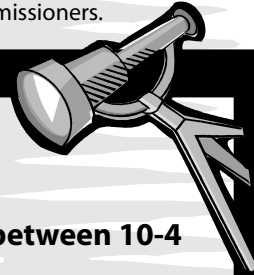


Please encourage your children to read during the summer months by participating in our space-themed reading program. Online registration **begins Monday, June 22**. Stop in anytime that week to get your logbook and our summer calendar.

For families who participated in previous Summer Reading Programs, you will likely notice some differences this year. Because of budget reductions and related staffing cuts, we've scaled down our summer programs. We will continue to try to give you the best programs possible, and request your patience and support as we move forward.

Starship Adventures @ your library, the 2009 Statewide Reading Program, is funded by the Shrewsbury Public Library, the Massachusetts Regional Library Systems and the Massachusetts Board of Library Commissioners.

## PROGRAMS



### Monday Crafts

Appropriate for Grades K-2  
No registration necessary **Drop in between 10-4**  
June 29, July 13, July 27, August 10

### Tuesday Puzzles and Games

Appropriate for grades K-4 **Drop in between 10-4**  
Stop in and play some board games with your friends  
**Tuesdays from June 30 to August 4**

### Wednesday Night Talent Show

Appropriate for all ages. **6:30PM**  
Share your special talent! Do you sing, dance, juggle? Sign up for our talent shows. Any age may participate. Pick your date, tell us what you will be doing, and perform for our summer audience! Ask the children's librarians for details. **July 8 and July 29**

### Thursday Storytimes 10:30AM

Appropriate for preschool age - K  
No registration necessary  
**June 25, July 9, July 23, August 6**



Shrewsbury Public Library  
609 Main Street  
Shrewsbury, MA 01545

Non-Profit Organization  
US Postage Paid  
Permit #192  
Worcester, MA 01613

# LIBRARY NEWSLETTER

ECRWSS  
Resident Customer  
Shrewsbury, MA 01545

## Proposed Hours\*

Mon.-Wed. 10AM-9PM

Thurs. & Fri. 10AM-5PM

Sat. 10AM-5PM (closed July & August)

## Contact Information

Phone: 508-842-0081

Fax: 508-841-8540

TTY: 508-841-8530

[www.shrewsbury-ma.gov/library](http://www.shrewsbury-ma.gov/library)

\*Actual hours to be determined upon completion of fiscal year 2010 budget process.

## THANK YOU SUNDAY SPONSORS — 2009 Season

Twenty-two generous sponsors provided funds for thirty-three afternoons of library service. We hope our patrons will acknowledge their appreciation by patronizing the businesses, supporting the efforts of the civic groups, or personally thanking the private citizens who donated. Our donors' consistent and generous support during these difficult economic times is remarkable. Please let your appreciation be known.

**Four Sundays Each**  
Shrewsbury Federal Credit Union  
Dunkin' Donuts

**Two Sundays Each**  
Central One Federal Credit Union  
Webster Five Cents Savings Bank  
Shrewsbury Education Association

### One Sunday Each

Shrewsbury Firefighters Association  
Polito Development Corporation  
Ruth & Philip Heywood  
Gerald Isaacson  
Brian Smith/Spectros Associates  
Jeffrey & Priscilla Billingham  
Zuromskis-Whitney Associates Real Estate  
Yu-Bin Liang and Wei Kong Yeoh  
Welcome Wagon Club of Shrewsbury  
Amica Insurance  
Friends of the Shrewsbury Public Library  
David & Johanna Musselman  
Shrewsbury Rotary Club  
Lilliput Early Childhood Center  
Shrewsbury Lions Club  
Laurie & Matt Hogan  
And two anonymous donors