



The Shrewsbury Public Library

Spring 2009

From the Director:

Dear Readers,

These are rather dichotomous times for library officials and library supporters. Foundations, corporations, community groups and individuals consistently donate to sponsorship programs and the library building fund, and at the same time we struggle with reduced budgets. While library use is growing at an incredible pace, and new forms of support for libraries are being developed (library foundations, sponsorship programs, non-profit PILOTs, etc.) librarians and library supporters must constantly fight the mistaken sentiment that libraries are obsolete or inconsequential.

If you consider library usage alone, you find a very well used community resource. Seven out of 10 residents have active library cards (and children are only issued cards once they turn five years old.) Just look at the growth of loans, library visits and inter-library loans of the past decade, shown in the chart below.

I sometimes hear people speak of libraries as non-essential. I would argue that we are co-essential with other municipal and community functions. We are part of the fabric of a healthy community. We provide essential services in early literacy, access to online job applications, Medicare and tax forms, and the growing body of E-government information. We are a gathering space for students after school, and deliver reading materials to homebound individuals. We assure access to online and print resources. We serve as a community meeting and gathering space. We support home schoolers and formal and self-directed education. We provide the information and skills needed for life, work and school.

The library recently received a gift, which served as a good reminder of how valued public libraries are. Johanna Musselman donated a print that once belonged to her mother. The print is a copy of George Hartnell Bartlett's 1904 map of public libraries in Massachusetts. Each of the 228 libraries shown on the map is rendered in a detailed pen and ink drawing.



It's remarkable to see the number of public libraries spread across the state at this early date. Free public libraries in Massachusetts were established primarily in the late 1800's and early 1900's. Most were the outgrowth of earlier "subscription" or "social libraries." These fee-based libraries provided access only to members who paid a subscription fee, usually the elite men of the community. The Shrewsbury Public Library had such a predecessor, a Social Library established in 1792 by a group of town fathers.

Fiscal Year	Annual Loans	Annual Visits	Inter-Library Loans
1998	263,067	177,168	3,443
1999	254,567	178,962	3,737
2000	286,069	181,902	3,424
2001	258,798	182,250	7,230
2002	266,159	189,832	9,637
2003	297,744	192,317	13,750
2004	333,712	209,242	24,446
2005	341,803	218,228	32,875
2006	342,279	219,164	41,851
2007	352,955	230,675	47,255
2008	377,441	238,134	53,195

It would be another eighty years before all in town had access to a public library. In 1872, Town Meeting members voted to provide a room for a public library in the Town House. The new public library's collection included 152 volumes that had been donated by the old social library. Within two decades, the library outgrew this one room, so in 1894, Town Meeting voted to purchase the Bond Estate. A new roof was put on, internal repairs completed, and for almost a decade, library services were provided out of this old home. To accommodate larger collections and increased usage, townspeople voted in 1901 to build a library building with funds from the estate of Jubal Howe, a Shrewsbury native and successful watchmaker and jeweler. The Bond House was moved to another site, the town purchased 30 feet of land on the east side of the lot and the new library was built where it stands today. It opened to the public on September 24, 1903.

Even though Bartlett's map was printed in 1904, it still depicts the old Bond House as Shrewsbury's library. I suspect Shrewsbury library officials of the time would have preferred their beautiful new library building depicted on the map. You see, there were big plans for the map. The Public Library Commission of Massachusetts, that commissioned this 1904 map, displayed it at the 1904 Louisiana Purchase Exposition.

The map won the fair's grand prize. It was again displayed at the Lewis and Clark Exposition the following year.

What struck me about the map is the obvious pride people had for their public libraries. Free and open access to the reading rooms and the books the library contained was a novel thing at the time. Shrewsbury residents and town officials alike treasured their new library. In a town report of the period, one official declared, "Among the many fine library buildings found in towns of the State, Shrewsbury now has one that is ranked among the best, and it is a source of gratification and pride to all our citizens."

We'll be hanging Bartlett's 1904 map of Massachusetts libraries in a prominent spot, for all to enjoy, to remind us how treasured public libraries were in their infancy and are still today.

Sincerely,

Ellen M. Dolan

ADULT SERVICES

~ EVENTS FOR THE SPRING ~



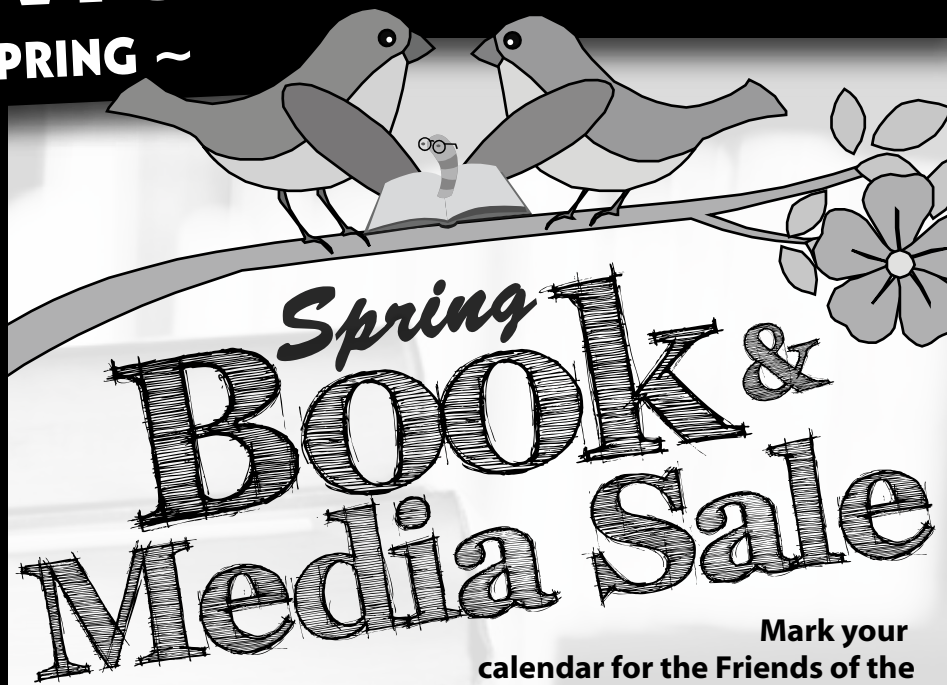
SPECIAL SCIENCE FICTION BOOK CHAT EVENT

You've played the game. Now experience the book!

An event for adults and teens!

If you are addicted to playing Halo or one of its sequels, or simply love a good science fiction story, don't miss this special event. Check the book out today at the library, and come to the event for your chance to take part in a discussion and possibly even win a prize! If ten or more people attend, a GameStop gift card will be raffled off! No need to register, just come to the event.

Wednesday, March 4th at 7:00PM



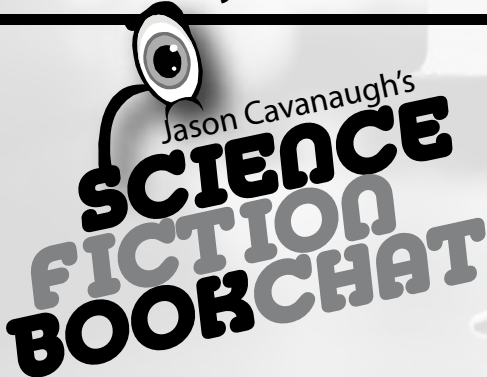
Mark your calendar for the Friends of the Shrewsbury Library's Annual Book and Media Sale.

Friday, May 15th 9:00AM – 4:00PM

Saturday, May 16th 9:00AM – 4:00PM

Sunday, May 17th 1:00PM – 4:00PM

Beginning April 1st the Friends will be accepting donations of all books and media that are in good condition. Funds will be used to benefit the Shrewsbury Public Library.



Book chats are all on Wednesday nights at 7:00PM

MARCH 4th:

HALO: Ghosts of Onyx by Eric Nylund

APRIL 1st:

The Hobbit by J. R. R. Tolkien

MAY 6th:

Wolverine: Weapon X by Marc Cerasini

Cyndi Creedon's Eclectic Browsers BOOK CLUB

Wed., March 25th, at 10:30AM

The Sound and the Fury
by William Faulkner

Wed., April 22nd, at 10:30AM

Franklin and Lucy
by Joseph E. Persico

Wed., May 27th, at 10:30AM

Penelopiad
by Margaret Atwood

All are welcome to attend. Books will be held at the circulation desk one month prior to date of meeting. Free refreshments served!

ACCOUNT EXPIRED?

Don't worry! When your account expires, you don't need a new card, you simply need to verify that all of the information on your account is up to date. We ask that this is done once a year by either stopping in or giving us a call. *It's that simple!*



MONTHLY HEALTH DISPLAYS

MARCH: National Kidney Month

APRIL: Cancer Control Month

MAY: Mental Health Month

Come to the library for free information and book suggestions on these important topics.

ADULT SERVICES

~ EVENTS FOR THE SPRING ~

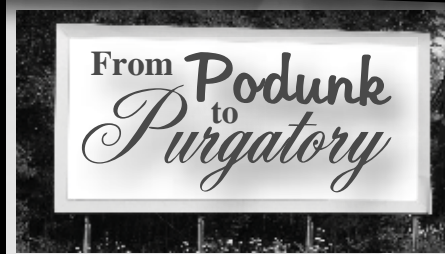
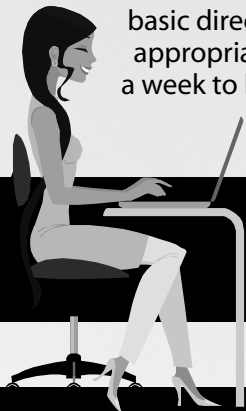
The Frugal Shopper!

MONDAY,
MARCH 9TH - 7:00-8:45PM

Coupons! Coupons! Coupons! Learn how to clip with the best of them!

VOLUNTEER HELP WANTED

We are looking for people who love the Library to be LIBRARY GREETERS. Part of this job would be to welcome patrons, answer basic directional questions, and refer requests to appropriate Library Staff. If you have two to three hours a week to help, stop by the Circulation Desk and speak with Nancy Colby.



Peter & Deborah Lincoln, from Lunenburg, share their hilarious experience of visiting all 371 towns & cities in Massachusetts within a 9-month period.
MONDAY, MARCH 2nd
7:00-8:45PM

SHREWSBURY GENEALOGY CLUB
Open to anyone interested in genealogy and family history.
Mar. 23, Apr. 27 & May 18 - 7:30PM

computer classes Spring 2009

Pre-Registration and a \$5 cash deposit are required for all classes. Must sign up at least 24 hours in advance *at the library*.

Crash Course in Computers (1 Hour, 30 Min) Size: 18

A beginner's workshop designed for those who have never used a computer.

Tues. Mar. 10th, 10:30AM

Digital Cameras 101 (1 Hour) Size: 8

Bring your digital camera for an informative session on how to unlock its full potential.

Wed. Apr. 8th, 2:30PM or

Wed. May 20th, 3:00PM

Questions? Contact Dennis Holtgreffe
dholtgreffe@cwmars.org 508-842-0081 x4076

Intro to the Internet (1 Hour) Size: 18

Learn the basics of getting around on the internet, including how to use a web browser and how to search online.

Tues. Mar. 24th, 2:30PM

Intro to E-mail (1 Hour) Size: 18

An introductory course for people who have never used E-mail.

Mon. Apr. 20th, 3:00PM

eBay 101 (1 Hour) Size: 18

This course explores the very basics of buying and selling using the popular online auction site eBay.

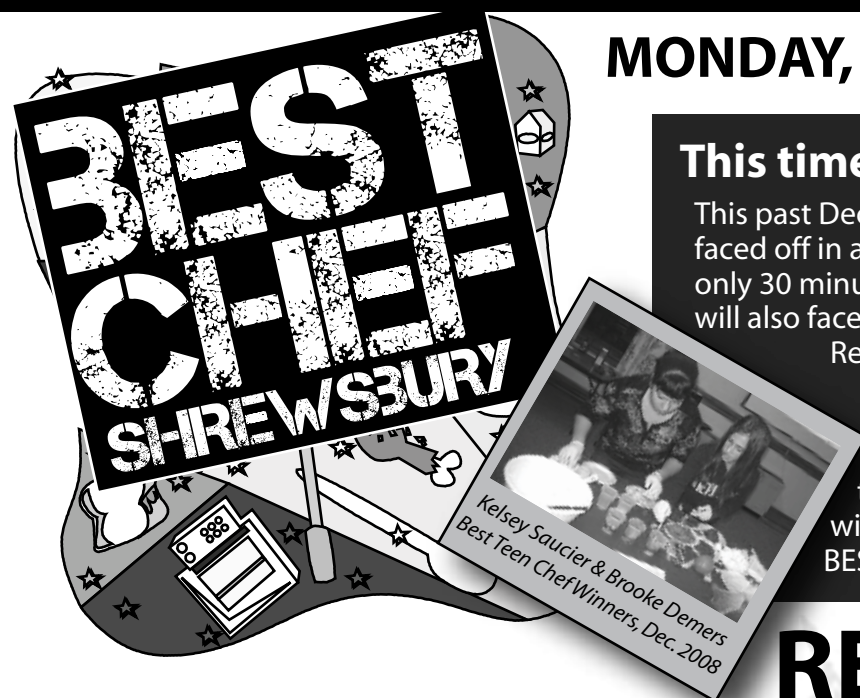
Wed. May 6th, 2:30PM

MONDAY, MARCH 16TH - 6:00-8:00PM

This time, the ADULTS put on the aprons!!

This past December, the teens of the Shrewsbury Public Library faced off in a heated competition to make the best dessert dish in only 30 minutes. Now, adult patrons of the library 18 and older will also face off in a similar challenge, with a new ingredient.

Register at the library FOR YOUR CHANCE to cook. At the beginning of the evening, all the registered team names will be put into a hat and four teams will be chosen to battle it out. The winner of the teen competition will then face off against whoever wins the adult competition to truly declare who is the BEST CHEF of SHREWSBURY!!! Audience members welcome!



REGISTER TODAY!!

FEELING FRIENDLY?

Join the Friends of The Shrewsbury Public Library

The Friends of the Shrewsbury Public Library is a special non-profit organization dedicated to the support of our Library. Becoming a Friend of the Library is an excellent way to support one of Shrewsbury's most valued resources. During these tough economic times, the Friends of the Library can help soften the blow of harsh fiscal realities by providing so many of the extras that make the library an exceptional place.

What do the "Friends" do?

- * Provide the Shrewsbury Public Library with financial assistance and often give time and energy to projects to maximize its resources.
- * Fund programs for children, teens, adults, seniors and families.
- * Sponsor an annual scholarship to a deserving Shrewsbury student.
- * Purchase museum passes for use by library patrons

How is the Friends group funded?

- Money comes from Friends' memberships, fundraisers and donations.

Who is involved?

- Community members who believe a strong, vibrant library is an important part of our town.

LEVELS OF 'FRIEND'SHIP':

<input type="checkbox"/>	FRIENDLY ACQUAINTANCE	\$5.00
<input type="checkbox"/>	TRUE FRIEND	\$25.00
<input type="checkbox"/>	BEST FRIEND	\$50.00
<input type="checkbox"/>	VERY BEST FRIEND*	\$100.00
<input type="checkbox"/>	BUSINESS ASSOCIATE*	\$300.00
<input type="checkbox"/>	OTHER AMOUNT*	\$ _____

CONTACT INFORMATION:

NAME: _____ PHONE: _____
 ADDRESS: _____ E-MAIL: _____

*Make checks payable to "The Friends of the Shrewsbury Public Library." Mail donations to 609 Main St., Shrewsbury, MA. 01545
 OR simply drop this completed form and payment off at the library.*

**A donation of \$100 or more will be rewarded with a complimentary leather bookmark and bookbag.*

From Page-to-Screen Luncheon Event

Fried Green Tomatoes at the Whistle Stop Cafe

WEDNESDAY, JUNE 24th, 10:30AM

Host Cyndi Creedon will lead a discussion of Fannie Flagg's southern tale "Fried Green Tomatoes at the Whistle Stop Cafe." Then the group will watch the award winning movie also scripted by the book's author. The film is rated PG-13. The chat is open to anyone interested, and books will be available for check out in the library prior to the event.

Lunch will be provided free of charge.

No need to register, just show up and enjoy!

WILL THERE BE A BIG READ 2?

If you participated in last year's Big Read community reading project, you'll be glad to know we are applying for a grant to conduct a second Big Read project. Last year we used Willa Cather's "My Antonia" to focus on the immigrant experience. If we receive another grant, we'll be using Tim O'Brien's "The Things They Carried" to focus on the experiences of the soldiers in Vietnam, as well as other issues of that period.

With the grant funds, we hope to:

- Invite local celebrities to make a taped reading of the book for broadcast on the public access station
- Involve local high school students in programs around the project
- Offer programs on the music of the 60's
- Present a scholarly program on the media's impact on public sentiment about the war
- Take a day trip to the Massachusetts Vietnam Veterans' Memorial at Green Hill Park
- Record wartime experiences of soldiers from WWII up to today
- Offer displays of war memorabilia
- Conduct a supply drive for soldiers or veterans
- Give special attention to local veteran's experience

And of course, we'll be conducting book discussions in various locations around town.

The grant application was submitted in early February and we hope to have word by the spring. If we get the grant, you can look forward to another great Shrewsbury Big Read.

NATIONAL
ENDOWMENT
FOR THE ARTS



THE **BIG
READ**

INSTITUTE of
Museum and Library
SERVICES



NATIONAL
ENDOWMENT
FOR THE ARTS



THE **BIG
READ**

INSTITUTE of
Museum and Library
SERVICES



YOUNG ADULT

~ PROGRAMS FOR THE SPRING ~

THE SHREWSBURY PUBLIC LIBRARY 3-HOUR WRITING SHOWDOWN

FRIDAY, MARCH 20th (No School!) - 11:00AM-2:00PM

Enter this unique competition if you can handle the pressure of creating an original short story in a limited amount of time. The stories will be created, presented, and judged all within a three-hour time period. Only fifteen spots will be open for this event, and one of the people in attendance will walk home with a \$50 Borders giftcard. Everyone in attendance will be treated to pizza for lunch.

**Lunch and a
Mo*vie***

**THURSDAY, APRIL 23RD -
11:00AM-1:15PM**

Thirty free tickets will be available at the circulation counter the day this newsletter is sent out! Each ticket will get you in to the screening of the mystery movie, and it will also get each participant a slice of pizza!

Movie clues:

Bella
Edward
PG-13

HERITAGE NIGHT

**THURSDAY,
MAY 28th -
6:00-8:00PM**



An Event to Celebrate Our Diverse Community of Teens!

We are looking for teenagers who can set up booths in our large meeting room to represent different countries. These participants should:

- ... come dressed in clothing from their chosen country.**
- ... bring games and toys from their chosen country.**
- ... teach other participants words from the language of their chosen country.**
- ...bring candy and appetizers from their chosen country.**
- ...provide detailed information for participants to take home with them.**

Judges will vote on their favorite country booth, and the winners will take home a great prize!

Further Rules (Please Read!):

Register your country at the library beginning April 6th. There will be only one booth allowed per country, but no limit to the number of people helping at that booth. The first person to sign up for each country will be in charge of that specific booth, but must provide contact information if others want to help them with that country. Participants have to be in grades 5-12, but do not have to be from the country they are representing. Instead, everyone involved in running a booth must be educated about their chosen country. There is no charge for this event, but people running a booth must provide all of the items and materials.

Children's Room

~ EVENTS FOR THE SPRING ~

ST. PATRICK'S DAY CRAFTS

Tuesday, March 17th,
10AM-4PM



MARCH MONEY MADNESS

Friday, March 20th 10:00AM - 4:00PM

Activities, games, & crafts
How to earn money and save



HOLI CELEBRATION

Thursday, March 12th at 10:30AM

Join us to celebrate the Indian festival of Holi - a festival of colors. Storytime at 10:30. Drop-in craft during the day. No registration required.



Seen and Unseen in Nature

This April vacation week, nature activities and crafts all week long - information will be posted in the children's room.



Storytimes

Baby & Me Tuesdays at 10:30AM.

A 30-minute program of stories, finger plays, songs, and movement designed for children ages birth to 2 1/2 with an accompanying adult. Siblings welcome.

Session One (Lottery March 9th-13th):

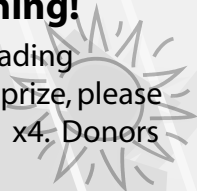
March 17th, 24th, 31st, April 7th

Session Two (Lottery April 13th-17th):

April 28th, May 5th, 12th, 19th

Summer Reading is Approaching!

We're getting ready for our 2009 Summer Reading program! If you are interested in donating a prize, please contact the Children's Room at 508-842-0081 x4. Donors will be thanked in our newsletter!



J PIC We have a new category of books - J PIC fiction - Fiction picture books that have an older theme and are appropriate for the school age child. Come in and ask us about them and receive a prize!



CRAFTS FOR MOM

Surprise your mom! Make a special craft for mom in the Children's Room.

Friday, May 8th, 10AM-4PM

Drop-In - No reg. req.

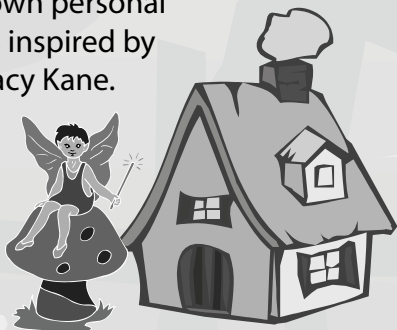
Fairy Houses

Thursday, April 23rd, 2:30PM - 4:30PM

Participants will create their own personal Fairy House. This workshop is inspired by the book "Fairy Houses" by Tracy Kane.

**SPACE IS LIMITED TO
20 PARTICIPANTS ONLY.
REGISTER STARTING 4/9**

Workshop facilitator
Cheryl Carlson-Perrow



Lunch Bunch

A blanket, a lunch, and you!

Wednesdays at 11:30AM

March 18th, 25th, April 1st, 8th,

May 6th, 13th, 20th

Come listen to stories while you eat! All ages welcome with an accompanying adult. No registration required, just drop in!

R2A



Kuma and Willow will be back to encourage reluctant readers or children who would like to practice their reading skills. Grades K-4. Register in the Children's Room or call for exact dates and times.

Provided by Paws for People, a volunteer group located at the Tufts Center for Animals, Tufts Cummings School of Veterinary Medicine.

PRESCHOOL STORYTIME

Thursdays at 10:30AM - March 19, 26, April 2, 9, 30, May 7, 14, 21. Preschool - Kindergarten. Drop in.

Shrewsbury Public Library
609 Main Street
Shrewsbury, MA 01545

Non-Profit Organization
US Postage Paid
Permit #192
Worcester, MA 01613

**LIBRARY
NEWSLETTER**

ECRWSS
Resident Customer
Shrewsbury, MA 01545

Library Hours

Mon.-Wed. 10AM-9PM

Thurs. 9AM-9PM

Fri. 9AM-5PM

Sat. 9AM-5PM (Winter/Spring/Fall)

Sun. 1PM-5PM (Winter/Spring/Fall)

Closed Weekends in July and August

Contact Information

Phone: 508-842-0081

Fax: 508-841-8540

TTY: 508-841-8530

www.shrewsbury-ma.gov/library

THANK YOU SUNDAY SPONSORS ————— *You did it!*

A special thank you to the sponsors of our Sunday Season (Fall '08-Spring '09)

Four Sundays Each

Shrewsbury Federal Credit Union

Dunkin' Donuts

Two Sundays Each

Central One Federal Credit Union

Webster Five Cents Savings Bank

Shrewsbury Education Association

One Sunday Each

Shrewsbury Firefighters Association

Polito Development Corporation

Ruth & Philip Heywood

Gerald Isaacson

Brian Smith/Spectros Associates

Jeffrey & Priscilla Billingham

Zuromskis-Whitney Associates Real Estate

Yu-Bin Liang and Wei Kong Yeoh

Welcome Wagon Club of Shrewsbury

Amica Insurance

Friends of the Shrewsbury Public Library

David & Johanna Musselman

Shrewsbury Rotary Club

Lilliput Early Childhood Center

Shrewsbury Lions Club

Laurie & Matt Hogan

And two anonymous donors